

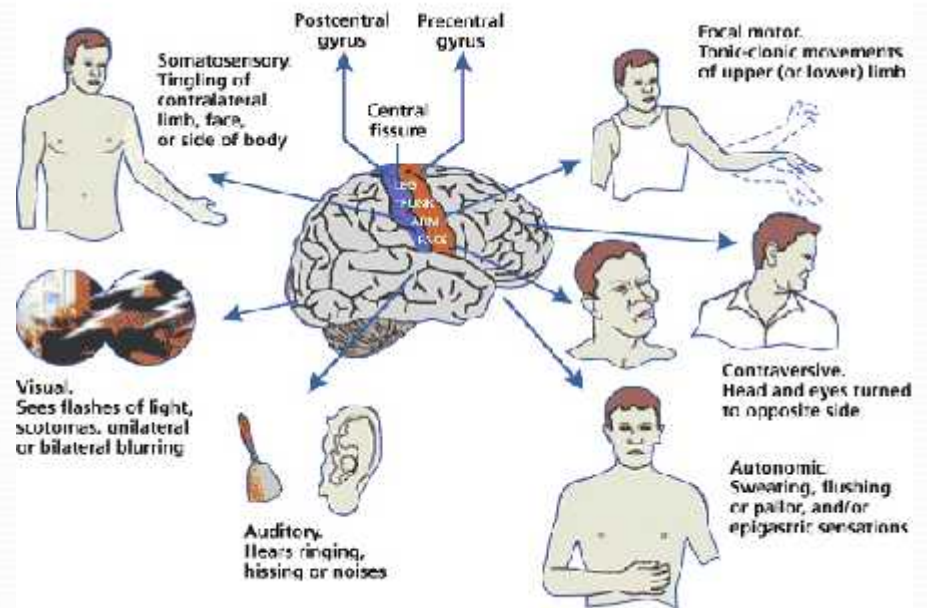
ANTIPILEPTICS DRUG'S



Antiepilepti Drug:

The drug which are used in the treatment of epilepsy called as antiepileptic drug.

Ex. Primidone, Tridione etc





Classification:

Drugs used in Grand mal Epilepsy.

- Ex. Methoin, primidone

Drugs used in Petit mal Epilepsy.

- Ex. Tridione, Paradione

Drugs effective in Psychomotor Epilepsy.

- Ex. Tridione, Primidone

Focal Cortical or Jacksonian Epilepsy.

- Ex. Methoin, Primidone

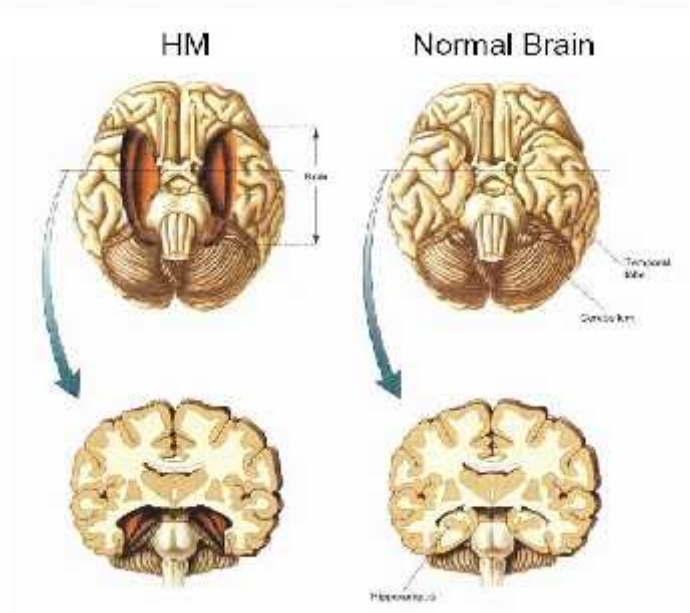
Status Epilepticus.

- Ex. Paraldehyde

Pharmacological Action:

(1) It inhibits the spread of seizure discharge in the brain.

(2) It depresses neuronal sodium concentration leading to a reduction in P. T. P (Post Tetanic Potentiation).



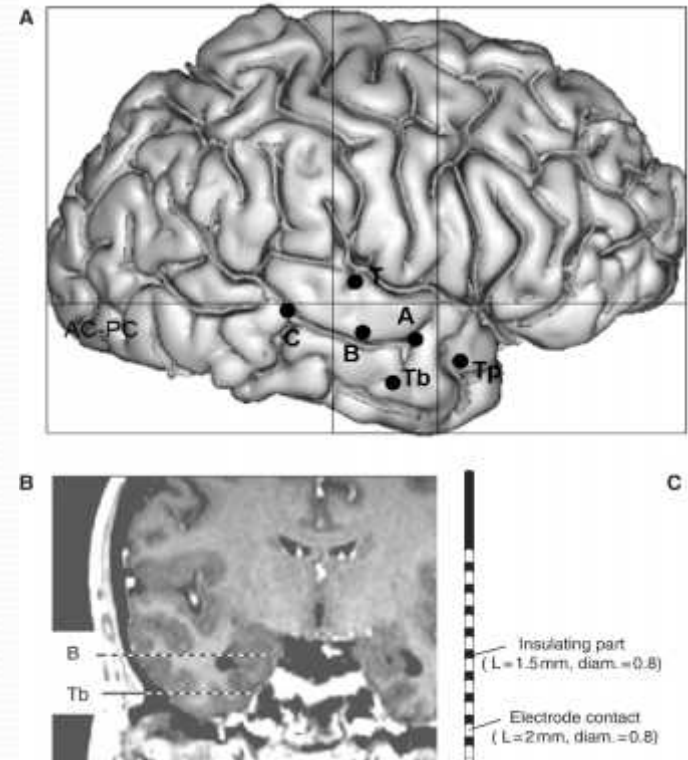


Therapeutic Uses:

- (1) It is used in the treatment of grandmal epilepsy,
- (2) In temporal lobe epilepsy,
- (3) Also used in focal cortical epilepsy,
- (4) It is used in cardiac arrhythmia,
- (5) Partial seizures resistant to other drugs,

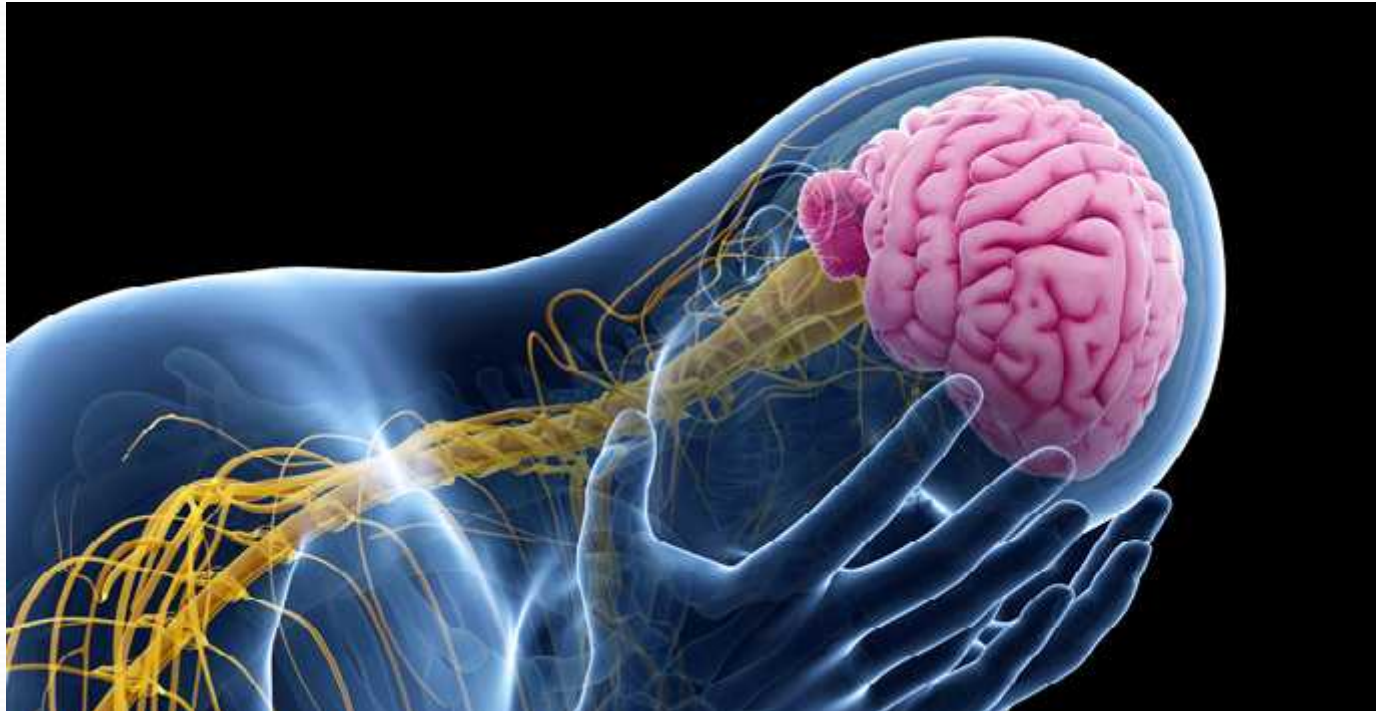
Symptoms :

- Giddiness,
- Headache,
- Drowsiness,
- Tremors,
- Insomnia.



Adverse Effects:

*Intolerance, such as skin rash may occur. Vertigo, ataxia, nystagmus and dysarthria may also occur during phenytoin therapy



Dose:Adults:

1-3 mg/kg/day in 2-3 divided doses or 50-100 mg 3 times daily. Individualize the dose according to the patient.....





PREPARED BY:

MOHAMMAD AAMIR SHAIKH

MOHAMMAD SAQUIB

MOHAMMAD ALEEM

MOHAMMAD SHAHEZAD

MOHAMMAD FERROZ QURESHI

GUIDANCE BY:

SYEDA SHAHANA